



joaia
AI travel guides

Building the future of AI Travel Guidance

Discover.Swiss Webinar | September 25

What is going on with AI in Travel?

- **49% of travelers** say they **expect more personalized and tailored experiences** during their trips .
- **32% of travelers** already **use AI-powered recommendations** (e.g., for trip planning or suggestions), and adoption is growing quickly .
- **70% of travelers** believe **technology improves their travel experience**, especially by reducing stress and complexity .
- **41% of travelers** actively look for tools that help them **discover “hidden gems” beyond the mainstream tourist path** .

Why, How, What

Why

Empower travelers with meaningful, flexible and personal journeys AND enabling DMOs to strengthen destination appeal and gain insights.

How

By combining local data with generative AI, we enable hyper-personalized, interactive guides that travelers can access anytime, and DMOs can deploy seamlessly with analytics and integration tools.

What

We buildt an AI-powered platform where travelers access Local Guides and DMOs easily create, manage, and integrate them across apps, websites, and the Joaia Marketplace.

Our DNA: A Traveler's Passion, an Innovator's Perspective, and a Lean Team's Speed



Darius
Barmettler

Co-Founder & CEO



Roger
Waldvogel

Co-Founder & CTO



Génesis
Schäfler

UX /UI Design



Andreas
Murk

Software Engineer



GOLDBACH



- Former **Head of CRM at APG|SGA** responsible for Digital Transformation and Customer Centricity – 5 years
- **Executive MBA** in Customer Experience
- **10+ years' experience** in Media and Advertising Market.

- Former Researcher at FHGR in **Natural Language Processing (NLP/AI)** – 4 years
- **15+ years of experience** in the development of professional software projects.
- **Second-time Founder**



Fabian
Untermoser

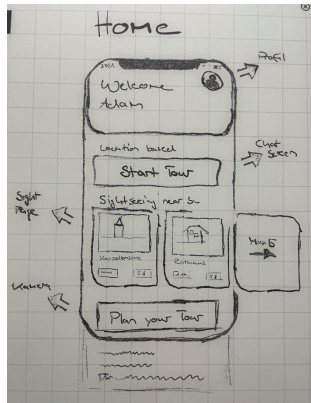
Software Engineer



Michèle
Camenzind

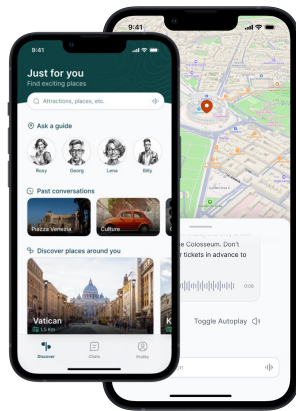
Head of Finance & HR

Where we come from and where we will go



Idee of using AI
for Sightseeing

2023



Build a Prototype

2024

Zürich,
Switzerland.

THIS IS BASEL

graubünden

LUZERN
INCEBNE
DIE STADT, DER SEE, DIE BERGE.

Collaboration
with DMO's

2024



Build
Infrastructure for
AI Local Guide

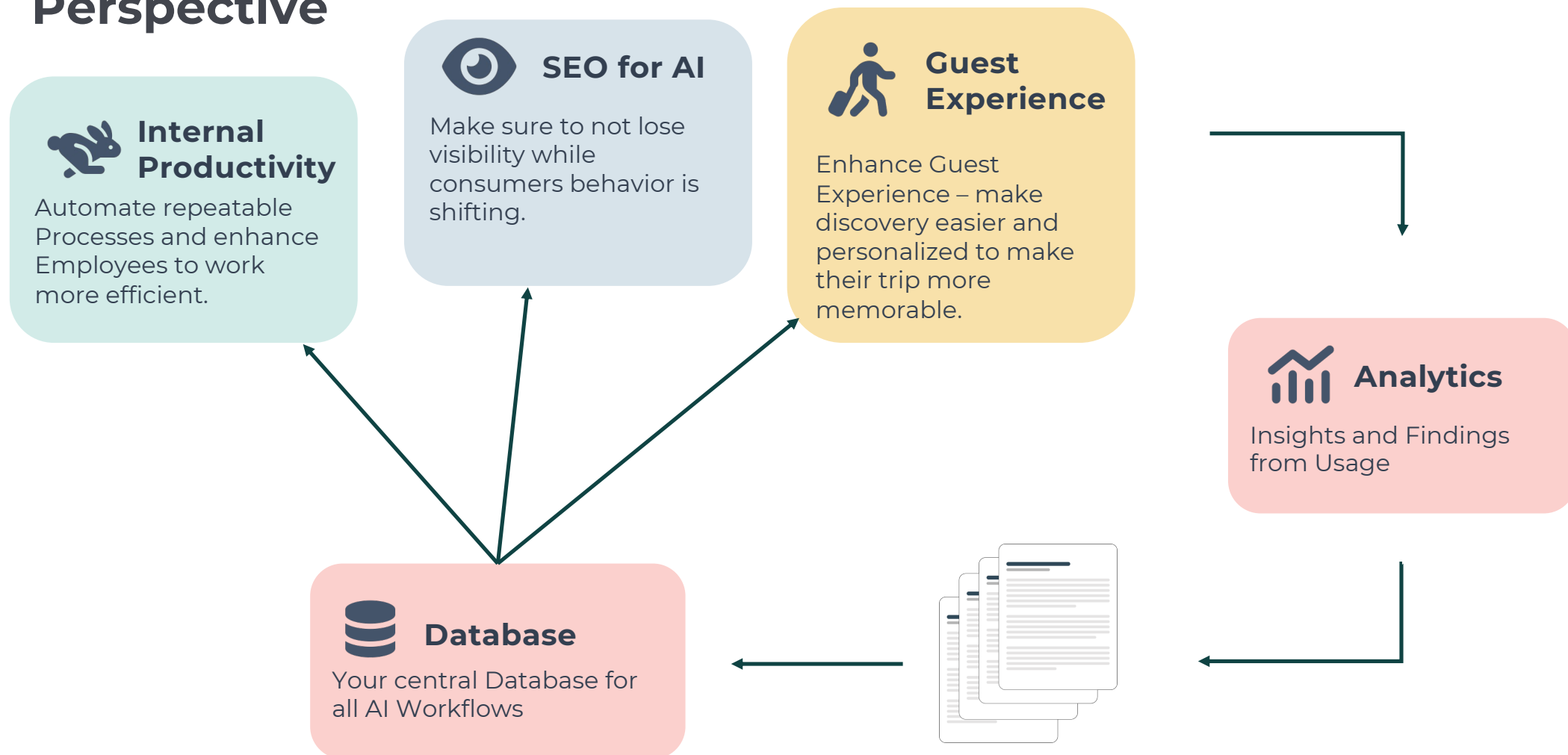
2025



More to come
Conversational Commerce via
Local Guide ; personalized
Tours ; Multiday Itinerary ;
Smart Glasses Integration

Future

Highlevel AI Strategy Pillars from a DMO Perspective



AI Local Guides



Anders Berg

👤 Digital Twin

📍 Oslo, Norway



Shanique Johnson

👤 Legendary Figure

📍 Kingston, Jamaica



Peter Meier

👤 Fictional Character

📍 Freudenberg, Germany



Hans Bühler

👤 Fictional Character

📍 Grindelwald, Switzerland



Chako Bole

👤 Legendary Figure

📍 Turmi, Ethiopia



Meryem Aksoy

👤 Digital Twin

📍 Ankara, Turkey



Doris Ann Carter

👤 Legendary Figure

📍 Bandera, Texas



Julia Richter

👤 Digital Twin

📍 Gothenburg, Sweden



Fernando Castillo

👤 Digital Twin

📍 Cordoba, Argentina



Henri Dubois

👤 Fictional Character

📍 Eguisheim, France



Madame Margaux

👤 Fictional Character

📍 Paris, France



Elena Moretti

👤 Legendary Figure

📍 Rome, Italy



Bringing Local Stories to Life with AI Guides



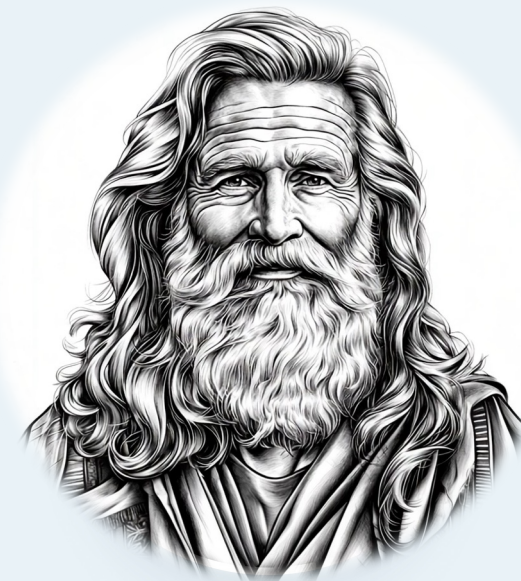
Madame Margaux

Fictional Character



Amira Khan

Digital Twin



Leonardo Da Vinci

Legendary Figure

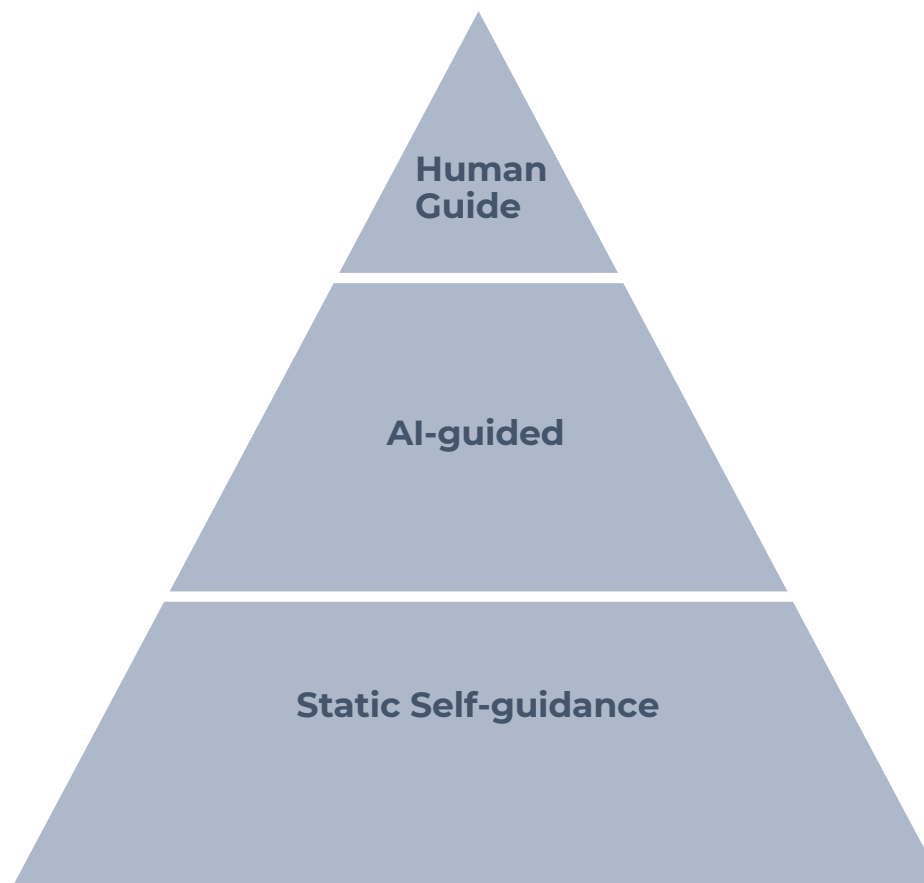
We position us as the second-best Solution to explore a Place after a Human Guide



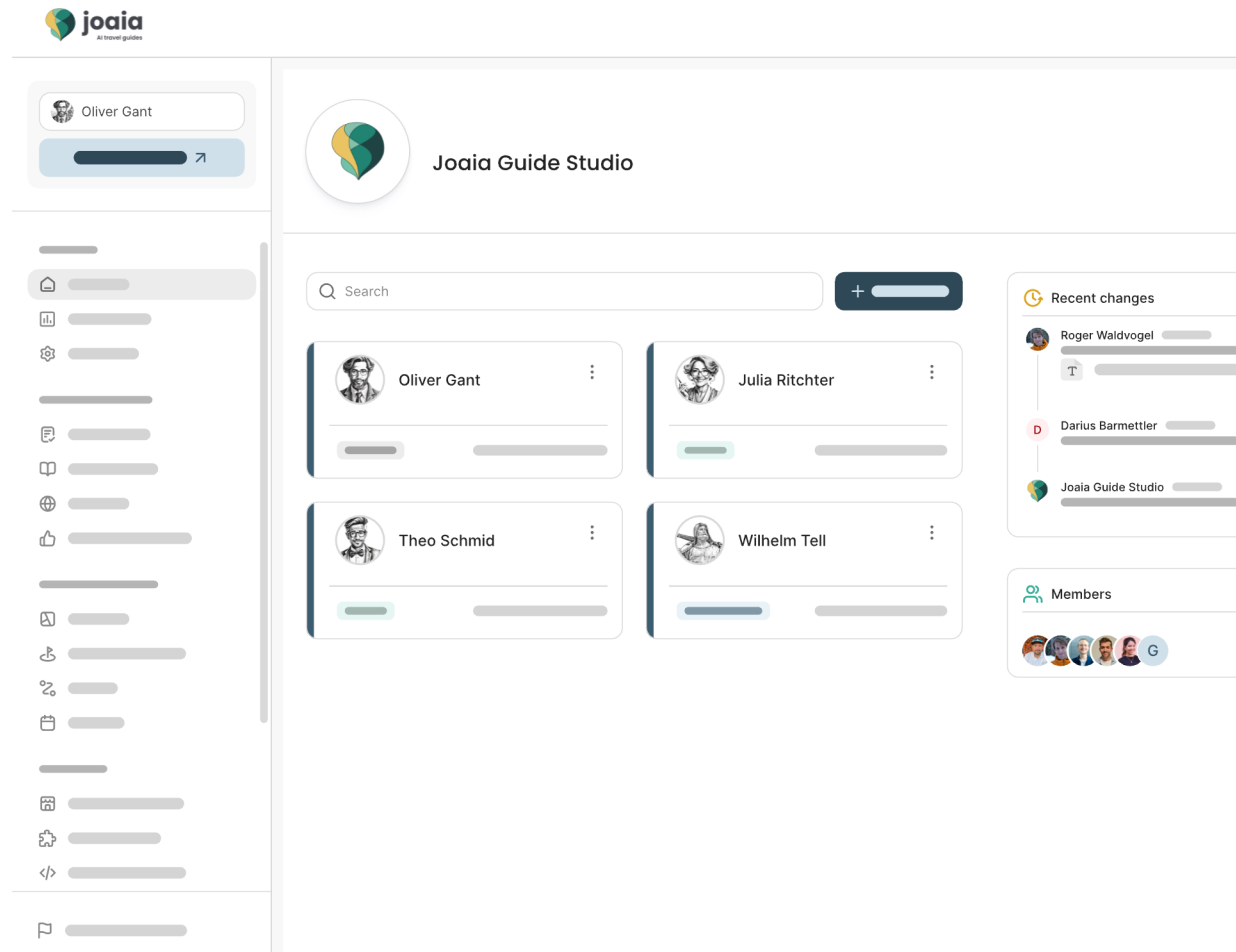
Curious Explorer

Independent travelers want flexibility, but current options limit the experience.

“Even for people who often go on guided tours, there’s no guide around 90% of the time.”



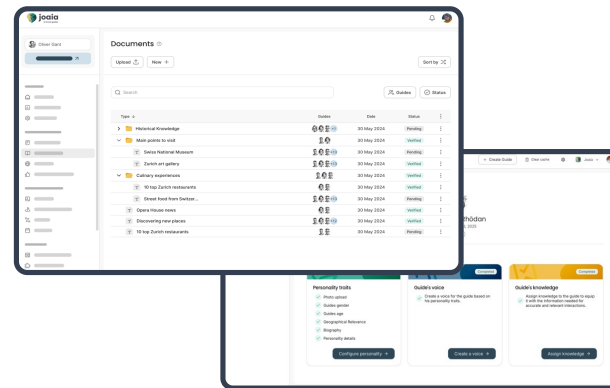
AI Solution



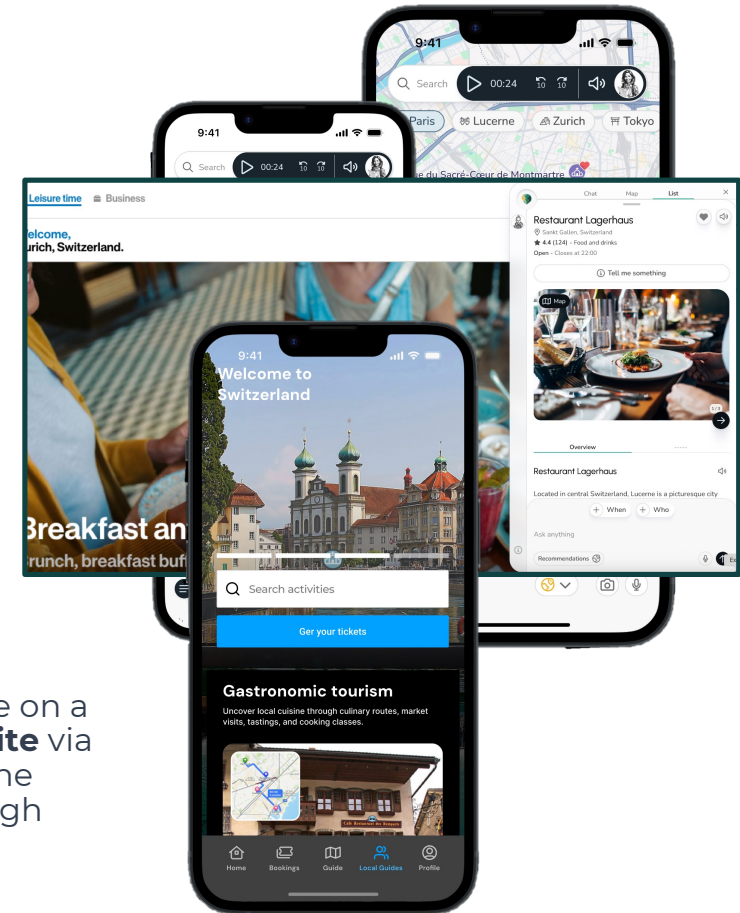
We turn local expertise into scalable AI Locals Guides.



Partners **upload or connect** their content



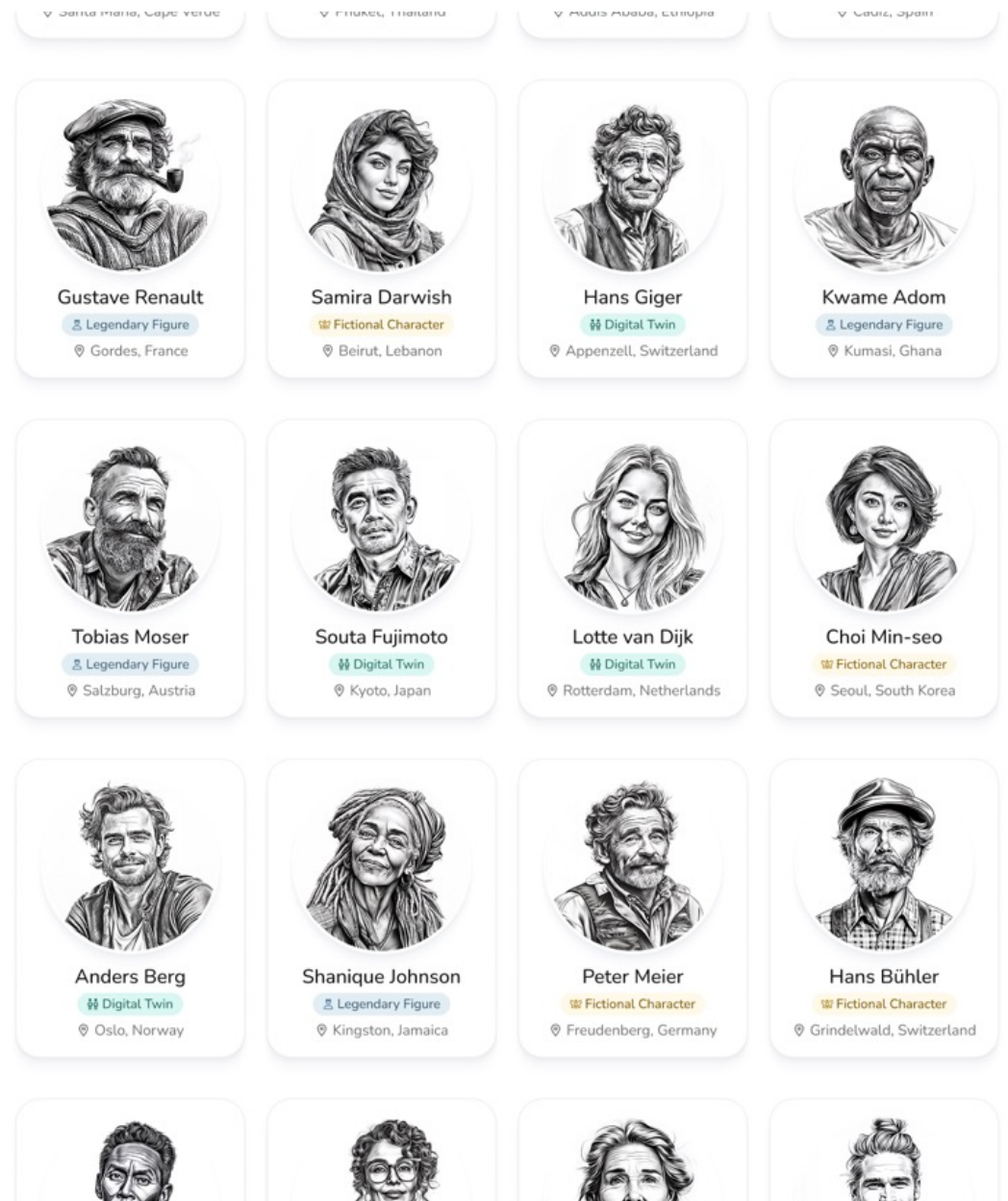
Guide Studio processes this knowledge and allows partners to create unique AI Guides



Check-out the [Introduction Video](#)

Local Guide can live on a destination's **website** via our plugin, inside the **Joaia app**, or through **API in other apps**

AI Guide Engine



Agentic AI Workflow with Context Engineering

User Interface - Layer

- Output in Text & Audio in over 75 Languages

Output

Memory - Layer

- Short-term for Context awareness
- Long-term for behavior personalization

Short-term Memory

Long-term Memory

Data - Layer

- RAG-Database for general POI Info
- RAG-Database for specific Creator Data
- Local Guides
- Location awareness, Wheater, Traffic (soon)
- User Profil and Interests

POI-
Database

Local
Guide
Database

3rd
Party
Data

User
Data

Foundation - Layer

- OpenAI for different Models
- 11Lab for Voice
- Tavily for Search

LLM-Models

TTS

Search



**Subscribe for
Newsletter**



**Follow on
LinkedIn**



Quem sabe o DIABO
Por Velho que Por DIABO